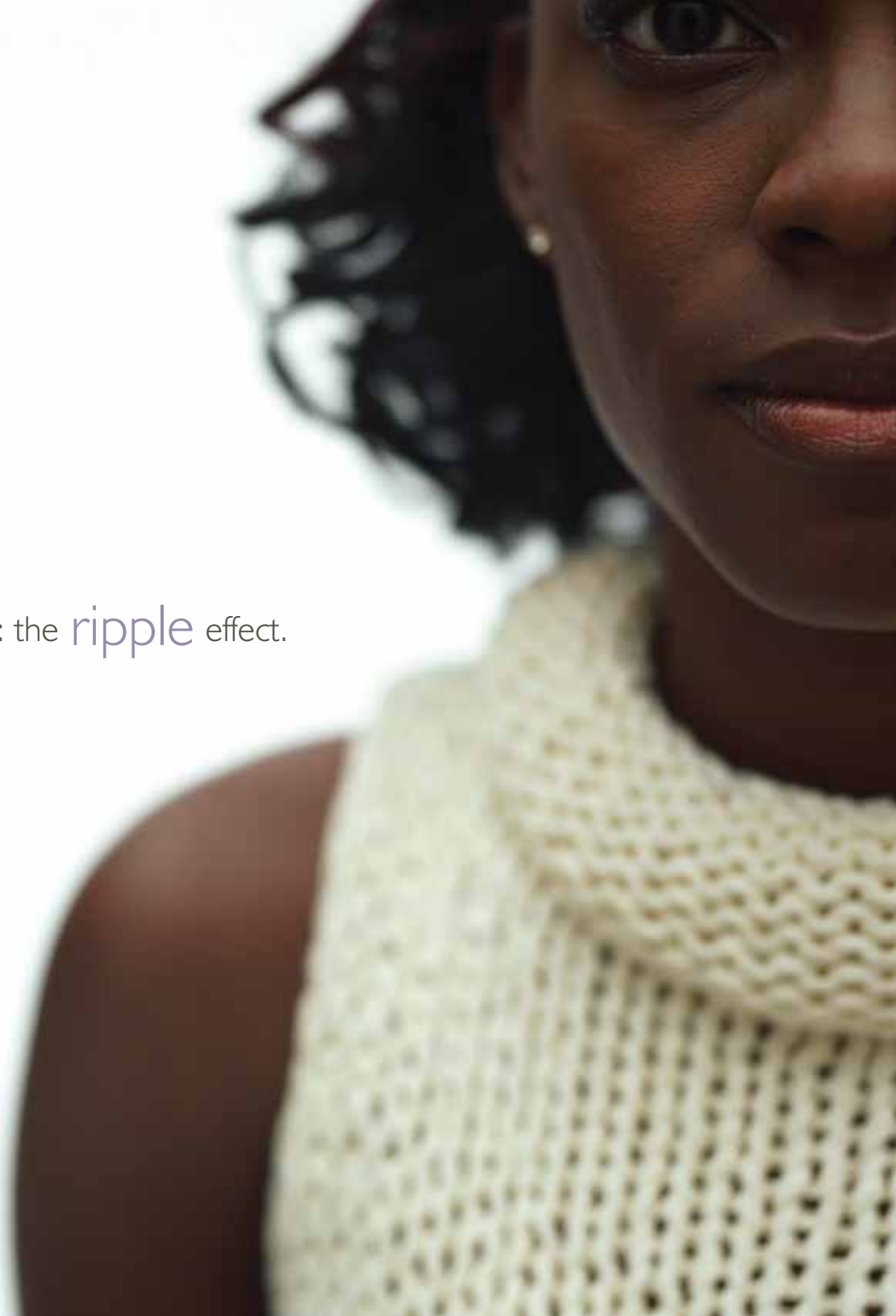




Empowering women: the **ripple** effect.

THE ATLANTA
WOMEN'S
FOUNDATION



A close-up portrait of a young Black woman with her hair in braids, smiling warmly. She is wearing a light blue top with a green section. The background is a soft, out-of-focus white.

Dear Supporters

Our theme for this year's

annual report and meeting is

The Ripple Effect: Empowering Women and Girls.

The ripple effect begins with your support
of The Atlanta Women's Foundation.

As Georgia's only foundation dedicated

to empowering women and girls,

you can be sure that your donation

is a wise investment

in the long-term health of your community.

The Ripple Effect: It starts with **you.**

In 1986, a group of visionary women founded The Atlanta Women's Fund as part of the Community Foundation for Greater Atlanta. In 1998, that fund had grown in importance and credibility to become independent as The Atlanta Women's Foundation (AWF). Since then, AWF has put over \$10 million back into our community. With your generous support, AWF has invested more than \$1 million in 2008 in our community by funding 23 high-impact organizations serving women and girls in Atlanta. These dollars are the first drops of water that begin the ripple of change needed in our community today. The ripple of your gift is manifested in many ways:

- **AWF is dedicated only to the work of empowering women and girls.** We make it our business to be ahead of the curve on trends and best practices regarding the empowerment of women. Progressive programs and new ideas are often incubated and sustained with the support of AWF.
- **Your gift is pooled with other donations** – large and small. We are leveraging every dollar.
- **Stringent grant-making selection and monitoring processes assure that your money is used wisely.** Only programs that show the greatest opportunity for long-term systemic change receive funding from AWF.
- **Your gift fills an important void.** Philanthropy focused on women lags behind. Only 6.4% of foundation grants in 2005 were awarded specifically to women.
- **When AWF makes a grant, the grantee partner often gets greater support from other funders.** Donors know that an endorsement from AWF gives their programs and organizations added credibility.
- **Money is just part of the ripple.** Technical assistance to AWF grantee partners helps improve their processes and outcomes. We lead the way for collaboration among grantee partners and community leaders.

As you read through these pages, we hope that you will recognize the important role you play. Your gifts are the beginnings of a ripple that can make a long-term change not just here, but around the world.

With appreciation for your care and your investment in our community,

- Emily-May Richards, Chair
- Barbara J. Mosacchio, CEO



The Ripple Effect: The positive impact of

When one drop of water hits the surface
of a still lake or pond, a series of ripples
is formed that becomes larger and larger.
We know that the ripple effect is real.

When we lift women and girls out of poverty,
we strengthen our communities.

When we strengthen our communities,
we strengthen our world.

By helping women and girls,
we create healthier communities
for all of us.



giving to women and girls.

The positive ripple is being felt in developing nations around the globe.

Across the globe, ending the cycle of poverty is viewed as a key strategy to stabilizing our unstable world. Ending poverty and empowering women is viewed as essential to building local economies, strengthening political infrastructure, and even as a means to ending terrorism.

- Women work two-thirds of the world's working hours, produce half of the world's food, and yet earn only 10% of the world's income and own less than 1% of the world's property. (*World Development Indicators, 1997, Womankind Worldwide*)
- The U.N. Millennium Goals include efforts specifically targeted to women and girls. "Poverty has a woman's face...Societies where women are not afforded equal rights as men can never achieve development in a sustainable manner."

- 46% of girls in the poorest countries have no access to primary education. (*ActionAid*)
- Yet, for every year of education that a woman receives, she increases her earning potential by 10% - 20%. (*CARE*)
- A study from Ghana showed that an increase in household assets held by women increased the budget for food and schooling and decreased spending on alcohol. (*The World Bank, "Gender Equality, Poverty and Economic Growth"*)

"Forget China, India and the internet: economic growth is driven by women."

- *The Economist*

The Ripple Effect: The investment in

Let's begin the positive ripple right here with our women, our girls, our community.

The Atlanta Women's Foundation is taking the lead on creating the positive ripple in this community. Our commitment is to lift the pressing issues facing women and girls to the top of the community's awareness and break the cycle of poverty.

- 43% of female-headed households in Atlanta with one child have an income below the minimum budget needed for a family of that size. 61% of single women with two children earn below this level.

(Status of Women in Atlanta: A Survey of Economic, Demographic, and Social Indicators for the 15-County Area, May 2007)

- In Atlanta, single female-headed households are growing at a faster rate than two parent households. Atlanta experienced a 43% increase in the last decade alone. This is 12% higher than Atlanta's total household growth and 17% higher than the national average. (Status of Women in Atlanta: A Survey of Economic, Demographic, and Social Indicators for the 15-County Area, May 2007)

“If poverty is a disease that infects the entire community in the form of unemployment and violence, failing schools and broken homes, then we can't just treat those symptoms in isolation.”

- Barack Obama

- Today's girls are a critical investment for tomorrow. Yet, the graduation rate for females in the state of Georgia was just 63.8% last year. (Diplomas Count: 2008)
- The poverty rate for children born to teen mothers who have never married and have not graduated from high school is 78%. Georgia has the 8th highest teen birth rate in the nation. (Georgia Campaign for Adolescent Pregnancy Prevention, Annie E. Casey Foundation - Kids Count 2008)
- Atlanta is the poorest city in the U.S. for children - more children in Atlanta live in poverty than in any other city. (Metro Atlanta Task Force for the Homeless)

women and girls pays back for years to come.

When women and girls are given the tools,
training and support to step up and out of poverty,
the ripple effect is transcending.

Children have role models for better lives and relationships,
opportunities for greater education and health,
and bigger ideas about their role in the world.

When women are skilled and employed,
the economy improves.

Welfare costs and crime go down.

The tax base increases.

The entire community becomes
more attractive to new businesses.

The effect on communities is sustainable
and multi-generational.



ACCION | \$20,000

ACCION works throughout the country to provide small loans to business owners and individuals who are often excluded from the traditional banking system and credit markets. In Atlanta, their goal is to assist economically vulnerable women by providing access to credit resources and financial education. Funds will support "Investing in Women in Greater Atlanta: Giving Credit Where Credit is Due," a program which offers small business or personal loans to women, along with financial education and support to loan recipients. ACCION also educates municipalities and chambers of commerce on the importance of microenterprise and home-based businesses.

9to5, Atlanta Working Women | \$65,000 (multi-year)

The organization works to improve the economic safety net for working women and their families through advocacy, public education, civic engagement, grassroots organizing, policy campaigns and leadership development. 9to5 also works to positively impact employment policies, especially creating and retaining jobs that are flexible and sensitive to the needs of families. Funds will support the organization's general operating budget.

The Atlanta Children's Shelter | \$5,000 The Atlanta Children's Shelter remains the only free child care in the city of Atlanta for homeless families; centrally located among the Homeless Continuum of Care network and easily accessible from public transportation. Funds from AWF will support ACS's Job Track Employment Program, which offers homeless women comprehensive life management and job readiness training that creates a foundation of competence and confidence – empowering individuals to grow, succeed, survive and thrive on their own self-sufficiency.

Center for Pan Asian Community Services | \$40,000

The Center for Pan Asian Community Services offers social support and health care services to immigrants, refugees and racial-ethnic minorities living in Atlanta. Core services include employment and business assistance, immigration and naturalization assistance, translation and interpretation services, counseling services and advocacy programs. Funds will support the Yin Yang Project for Asian-Pacific Islander women, a 6-week job training curriculum followed by employment referrals and mentoring services. CPACS also works with employers to improve cultural understanding in the workplace.

Community Advanced Practice Nurses | \$5,000

CAPN strengthens the lives of the medically underserved and helps interrupt the cycle of poverty and homelessness. Funds from AWF

will go towards the dental care program for women. Many homeless women go without basic dental care. Additionally, those who are victims of domestic violence often have injuries that interfere with their speech and appearance, and this impacts their ability to find employment. Those with dental infections frequently find it difficult to maintain employment as a result of chronic pain. CAPN provides free dental care through a partnership with a local dentist who donates his time and clinic space. This program covers the cost of supplies and the salaries of the dental assistant and hygienist.

The Drake House | \$5,000

The Drake House is the only organization offering emergency housing and support to homeless mothers in the North Fulton area. The grant from AWF will support a part time job coach who will conduct individual sessions with residents to identify strategies to improve job skills, increase wages, and identify resources for job training and employment advancement.

The Edge Connection | \$80,000

The first community microenterprise model in the United States, The Edge Connection helps low-to-moderate-income women, minorities and persons with disabilities launch small businesses and reach long-term economic self-sufficiency. The Edge trains other organizations to launch effective microenterprise programs and works with state legislators to develop policies that support and protect small business owners. Funds will support the organization's general operating budget.

Friends of International Community School | \$200,000 (multi-year)

The Friends of ICS support the International Community School, a charter school for refugee children resettled in DeKalb County. Refugee children often experience horrific violence, family separation, and lengthy stays in refugee camps with minimal to nonexistent educational opportunities. Funds will support a Saturday School program to work with unschooled refugee teenage girls in an accelerated, basic education program. This new curriculum will be developed in partnership with Agnes Scott College, and will lead to the launch of a small pilot school during the program's second year. The curriculum will be shared with other organizations educating young refugee women.

Genesis “A New Life” | \$80,000

Genesis offers a model program designed to meet the needs of homeless newborns and their families. Funds will support the agency’s general operating budget which includes components such as job training, housing services and a child development center. Each program addresses the comprehensive needs of families and is designed to encourage economic independence and prepare families for healthy, independent lives.

Georgia Association on Young Children | \$70,500 (multi-year)

The Georgia Association on Young Children is a nonprofit professional association focusing on the development of healthy young children ages 0-8. Funds will support GAYC’s advocacy and program components which address the fact that Georgia is one of the few states that does not allocate state dollars for child care subsidies for working families. GAYC will launch the Women’s Voices for Child Care Project to collect stories demonstrating the importance of quality, affordable and accessible child care. The story bank will be used for public education, policy briefs and advocacy alerts.

Georgia Campaign for Adolescent Pregnancy Prevention | \$20,000

Designed to broaden the traditional adolescent pregnancy prevention agenda, the Georgia Campaign for Adolescent Pregnancy Prevention has six statewide initiatives: training and capacity building for local adolescent reproductive health providers; an initiative to help service providers working with Latino communities; advocacy; the Second Chance homes network to help teen mothers become self-sufficient; the Carrera model, a year round, multi-year after school program that empowers youth; and the doula project which improves birth outcomes and prevents repeat births. G-CAPP trains providers in best practices, offers a network for other pregnancy prevention organizations, and advocates for policy changes at the state level. Funds will support their general operating budget.

Georgia Justice Project | \$25,000

The Georgia Justice Project provides free legal representation, social services and employment opportunities to help previously incarcerated clients make positive life changes. Funds will help launch the commercial wholesale bakery division of GJP. This new business,

located in Atlanta, will provide employment opportunities for GJP’s female clients who face unique employment challenges as a result of their criminal background and/or a limited employment history. Jobs at the bakery will offer a full range of benefits including livable wages, child care incentives, and support services. Profits from the bakery will be used to provide additional support for female clients. The project is ongoing, and has the potential to be replicated throughout the community.

Georgia Metros Girls Basketball Club | \$15,000

Georgia Metros has offered coaching and mentoring for young women in metro Atlanta for 25 years. The organization allows promising young female basketball players to take part in local and national basketball tournaments where they are seen by college coaches. For these young women, basketball means higher education, and often they are the first members of their family to attend college. The group also offers support year round to help young women graduate from high school and complete college. Funds support the organization’s general operating budget.

Jean Childs Young Institute for Youth | \$5,000

This youth-led organization brings together adults and high school students to address issues faced by youth. AWF’s grant will be applied to the Unique Girls program, designed to empower young women in grades 8 through 12. Girls enrolled in the program learn to take leadership roles and become role models and advocates for others. They also learn to take a stand against discrimination and harassment, with a better understanding of sexism, racism and religious oppression.

Moving in the Spirit | \$5,000

Moving in the Spirit combines dance with social justice, bringing arts education and after school enrichment to children without financial access to traditional programs. The grant from AWF will support the Junior Company, an intermediate level dance program for girls 8-12 years old. Within the dance curriculum are role-playing experiences that teach positive coping skills and problem solving. Members are matched with adults in the community for mentoring, and take part in monthly educational programs on issues of interest to pre-teen girls.

Planned Parenthood of Georgia | \$70,000

Funds will support Planned Parenthood’s programs, direct services and advocacy initiatives, with a specific focus on reproductive health education and services for teenage girls in Cobb and Gwinnett

counties. Planned Parenthood engages women and the community as a whole to speak out and ensure all women have access to appropriate family planning services and comprehensive sex education.

Quality Care for Children | \$50,000

QCC believes that all children deserve a quality early learning experience. The organization provides training and support to child care providers in Georgia, as well as referrals to parents seeking child care. Support from AWF will be used for programs focusing on family child care in Atlanta's low income communities. Family child care is the predominant type of child care available during non-traditional hours. Low income parents who work evenings and weekends depend on these providers in order to maintain their employment. QCC works with individuals before, during and after they open their family child care business. Assistance includes meeting state requirements and regulations, child safety, and accreditation.

Refugee Resettlement and Immigration Services | \$58,000

RRISA offers a network of services such as employment assistance, community integration assistance and youth services for refugee families recently relocated to Atlanta. Funds will support a series of small groups for refugee women to address job related concerns, bolster employability, and foster family stability. In addition, RRISA staff work with public school personnel to develop school environments that accommodate the cultural differences experienced by refugee girls, and also with state legislators on policies impacting refugees.

VOX Teen Communications | \$20,000

VOX uses communications and journalism as a tool for personal and community development, giving teens a voice and safe space to share information. Funds from AWF will support the Epiphany Girls Group which offers monthly drop-in writing and discussion groups, all planned by peer facilitators. The program directly addresses feelings of isolation, low self-esteem and poor peer relationships, while emphasizing skills necessary for economic independence.

Women of FIRE | \$5,000

Women of FIRE (Friends Integrated for Remarkable Excellence) supports the underprivileged women and children in the Liberian communities of Fulton, DeKalb and Gwinnett counties. AWF's grant will support the Big Sister-Small Sister Mentorship Program, which matches members with teenage daughters of newly immigrated refugee families. The year-round program builds employment and leadership skills as well as self esteem. Program components include retreats and quarterly outings as well as seminars and workshops on pregnancy prevention, job training, college preparation and financial empowerment.

Women's Policy Education Fund | \$67,000 (multi-year)

The Women's Policy Education Fund works to support public policies that improve the lives of Georgia's women and girls. Their vision is a world where women and girls are free of discrimination based on gender, race, national origin, age, sexual orientation or disability. WPEF achieves this through public education, policy research and analysis, and monitoring the state legislative process. Funds will support direct operating expenses and an executive director to grow the organization.

Women's Resource Center to End Domestic Violence | \$100,000 (multi-year)

Funds will support an innovative program to address the impact of economic violence on women and their families. Limiting a partner's access to money, not allowing her to work, identity theft, and tampering with birth control in an attempt to force pregnancy all limit a woman's economic independence. WRC's new program will conduct research on how women who have survived domestic violence are able to accumulate assets, and will conduct interviews with women survivors of financial abuse. This research will form the first curriculum designed to work with women who have experienced economic violence.

Special Project

Juvenile Justice Fund – A Future. Not A Past. | \$705,000 (multi-year)

The funding for this program came through a generous grant by the Harold and Kayrita Anderson Foundation. Kayrita Anderson's dedication to finding the root causes of issues impacting women and girls, such as child sexual exploitation, led her to choose The Atlanta Women's Foundation because of its expertise in identifying solutions to the challenges facing women and girls in our community. Ms. Anderson has committed herself to stand up for those girls being victimized; to change their lives for the better and to urge others to stand with her to make lasting social change. Spearheaded by the Juvenile Justice Fund, A Future. Not A Past. is a statewide campaign to stop the prostitution of girls in Georgia by building a barrier between children and those who seek to harm them through commercial sexual exploitation. The campaign is tirelessly addressing the issue through a four-tiered strategy of research, prevention, intervention and education. It is the mission of A Future. Not A Past. to protect and inspire hope in these girls, the true victims of this illicit practice, as well as to disable demand and prosecute the pimps and johns who make the prostitution of children a gruesome reality in Georgia.

Grantees

Special Thanks to All Our Donors

Thank you for your generous support. This list reflects gifts received during the 2008 calendar year. If you note an omission or error, please contact us. Thank you.

Anisa I. Abdullahi	Maria Artemis	Bennett Thrasher PC	Cindy A. Brazell and Katie Phelps
Representative Stacey Y. Abrams	Kathy and Lawrence Ashe	John Bentivoglio	Mrs. Carey P. Brazell
Juli Achee	AT&T Foundation	Minnie Benton	Regina S. Bridges
Achieve Services, Inc.	Atlanta Daily World	Jacqueline Berkelhamer	Lisa Brill
Madeline and Howell E. Adams Jr.	Atlanta Housing Authority	Candy Berman	Jason E. Bring
Jeffrey C. Adams	Atlanta Life Insurance Co.	Wendy Best	Nancy Brittain
Reverend Joanna M. Adams and Alfred B. Adams III	Atlanta Magazine	Best Buy Co., Inc.	Carol D. Brodie
Lisa K. Adler	Atlanta Woman	Aiko Bethea	Donna Jean Brogan
Affordable Equity Partners, Inc.	Adwoa Awotwi	Kali Wilson Beyah	Mr. Benjamin Brooks
AGL Resources	Larraine Ayers	Pamela Bicknell	Althea Broughton
AirTran Airways	Enjoliqye D. Aytch	Veronica Biggins	Barbara W. Brown
Pat Alacqua	Karen Babino	Mindy K. Binderman	Rosalind H. Brown
Elaine B. and Miles J. Alexander	Jennifer Bain	Sherry Binkley	John L. Brown
Sandra P. Alexander	Linda S. Baker	Pamela Bishop	Judi V. Bruce
Carolyn Zander Alford	DeFloris M. Baldwin, Ph.D., R.N.	Jennifer S. Blakely	Natalie Brunson
Patience Allan-Glick	Alice H. Ball	Stephanie and Arthur Blank	Robert Park Bryant
Angela Z. Allen	Paula Ball	Herschel M. Bloom	Linda Bryant
Pinney L. Allen and Buddy Miller	Eleanor Banister	BNY Mellon Wealth Management	Katherine Bryant
Ann Alperin	Bank of America	BoardWalk Consulting	Dr. Robert L. and Lucinda W. Bunnen
Alston & Bird LLP	Bank of North Georgia	Wendy Bojnowski	Allison Burns
Lee Ann Anand	Faith I. Barbe	John Bonds	B. Scott Burton and Ginger R. Burton
Peter Anderson	Diane S. Barnwell	The Honorable Alice D. Bonner	Birgit Smith Burton
Bob Anderson	Janice Barrocas	Martha B. Boone, M.D.	Business Wise Inc.
Judy M. Anderson	Marcy A. Bass	Sidney W. Boozer	Seletha Butler
Kathy Nunnally-Anemogiannis	Deborah A. Baumgarten, M.D.	The Honorable Lisa Borders	Dr. June Dobbs Butts
Anonymous	Shannon and Jay Baxter	Mrs. Kimberley Borna	Susan Cabot
Boyce Ansley	Kayron F. Bearden	Edward E. Boshears	Cabot Creamery Cooperative, Inc.
Virginia Apperson	Wendy Bearman	Nancy Boxill	Peggy J. Caldwell
Rebecca D. Armor	Dorothy Beasley	Suzette Brading	Cynthia Cann
Arnall Golden Gregory LLP	The Honorable T. Jackson Bedford, Jr. and Mrs. Patty Bedford	J. Michele Bradley	Kate Canterbury
Elizabeth Arnett	Mark Begnaud	Amelia Braeunig	Emily Watts Card
Claire Lewis Arnold	Todd Behrend	Nancy F. Bramlett	Denise Cardin
Ellen Arnovitz	Meredith Bell, M.D.	John and Lisette Branscomb	Carlton Fields, P.A.
Yetty Arp	Lee Ann Bellon	Elizabeth Branstead	
		Branstead Properties, LLC	

Donors

Rebecca Carr
 Lindsey Carter
 Juanita Carter
 Heather M. Carter
 Sarah Cash
 Eleanor Caswell
 Catherine M. Cattles
 Center For
 Black Women's Wellness
 Henry R. Chalmers
 Andréa R. Chambers
 Yvonne Chandler
 Lisa E. Chang
 Tracy Chapman
 Susana Maria Chavez
 Keri Chayavadhanangkur
 D. BryAnn Chen
 ChoicePoint, Inc.
 Cingular Wireless
 Marsha Cintorino
 Citi Global Impact
 Funding Trust, Inc
 City of Atlanta
 Johnnie L. Clark
 Barbara T. Cleveland
 Coca-Cola Enterprises, Inc.
 Anne Cochran
 Melody Cochran
 Rebecca Dimling Cochran
 Edie Cofrin
 Marjorie Cohen
 Dianne Hamell Cohen
 Judge Brenda H. Cole
 Mr. and Mrs. David A. Cole
 Edith Collie

Vicki S. Collier
 Community Voices
 Amy Jorgensen Conlee
 Keri Conley
 Ansley M. Conner
 Lauren E. Cook
 Rosalie Cooper
 Kay Cooper
 Carol Z. and Larry Cooper
 F. Dean Copeland
 Ms. Cassie Coppage
 Marianne Cordora
 Cathy Moreno Cortright
 Ann Coulter
 Cox Enterprises, Inc.
 Coxe Curry & Associates
 Carolyn Crafts
 Ann and Jeff Cramer
 Leah Creque
 CREW Atlanta
 Charlene Crusoe-Ingram
 Patricia B. Cunningham
 Ms. Dyanne Cunningham
 Betty Jo Currie
 Mrs. Theresa Danbert
 Margaret Daniel
 Aaron Danzig
 Denise Dauphin
 Carolyn D. Davenport
 Mary Davis
 Patricia C. Davis
 Stephanie Davis
 Stephanie C. Davis
 Rashida S. Davis
 Cari K. Dawson

Harriet E. Day
 Cynthia Day
 La Vonda De Witt
 Peter Dean
 Mrs. Kappy deButts
 Carey DeDeyn
 Janet Dee
 Sara Deitch
 Deloitte
 Dorian Denburg
 Anuj Desai
 Audra Dial
 Nancy Dietz
 DiscoverReady, LLC
 Fran Dixon
 Charlotte B. Dixon
 Ciji Dodds
 Danielle Donehew
 Hattie B. Dorsey
 Camilla Constance Fore
 Dotzenrod
 Stacey Pastel Dougan and
 Marvin Pastel
 Donna Douglas
 Lisa B. Dowling
 Dow Lohnes PLLC
 Sara Doyle
 Crystal I. Drake
 Triska Drake
 Enid Draluck
 Alison Drummond
 Pam Drummond
 Diane Durgin
 Cynthia E. East
 Melita Easters
 Inger Eberhart
 Jennifer French Echols
 Edelman Atlanta
 Judge Susan Edlein

Sally Sparks Edwards
 Michael J. Egan, III
 Ann Elliott
 Amy Ellis
 Florida Ellis
 Renee Ellis
 Laurie Emrich
 Ilene Engel
 Laurel Englehardt
 Omolewa O. Eniolorunopa
 Dr. Ina and Harold Enoch
 Elise R. Eplan
 Equifax, Inc.
 Ernst & Young LLP
 Cindy Ethridge
 Excellent Women, LLC
 Young Sun Faas
 Facelagic Essential Skincare & Spa
 Elizabeth Fairman
 Suzanne C. Feese
 Families First
 Jennifer Farmer
 Beth Farokhi
 Jinx and Harry Faulkner
 The Honorable Anne Fauver
 Federal Home Loan Bank of Atlanta
 Lendy Fedors
 Deborah B. Feir
 Eric R. Fenichel
 Valerie Fennell
 Virginia L. Ferguson
 Festivity Group, Inc.
 Andrew Flake
 Aida Perez Flamm
 Danielle Flammio
 J. D. Fleming, Jr.
 Clinton Fletcher
 Kara Flood
 Elizabeth Ford

Matthew Ford	Girls on the Run of Atlanta, Inc.	Nancy G. Hall	Etta Raye Hirsch
Margaret Foreman	Marjorie Girth	Nancy D. Halwig	Michele Hirsch
Martha Forlines	Anne Glaser	Anne Tyler Hamby	Hirtle, Callaghan & Co.
Daniel M. Formby	Victoria Glover	Avarita Hanson	Ann B. Hobbs
Ann G. Fort	James Gober	Bonnie Hardage	Rebecca Hoelting
Marie Brumley Foster	Bobbie and Jonathan Golden	Joseph W. Hardy, Jr.	Tiffany N. Hoffine
Martha Ann Foster	Goldman, Sachs & Co.	Sue Hargather	Eve Hoffman
Peter Fozzard	Dr. Cheryl Renee Gooch	Anne L. Harper	Michael F. Holbein
Lois L. Frank	Aimee R. Goodman	Angela Harris	Philip Holladay
Sherry Frank	Deborah L. Goodman	Kathryn L. Harris	Leslie Holley
Bernice B. Franklin	Paula Goodman	Michelle Lee Harris	Ruth Holmberg
Mayor Shirley Franklin, City of Atlanta	Carole and Jim Goodspeed	Natalie Harris	Christine Holmes
Dorothy B. Franzoni	Neal Gordon	Nicole Harris	Linda May Horwitz
Sybil Freeman	Andrea M. Gossman	Patricia Harris	Stacie Houghton
Stephanie Friese	Rabbi Pamela Gottfried	Julie B. Hairston	Julia Houston
Dr. Carolyn Frye	Mark A. Gould, Jr.	Jacquelyn Hartley	Jacquelyn Howard
Fulton County	Lesley Grady	Marian D. Hartsfield	Jennifer Howard
District Attorney Office	Leslie J. Graitcer	Hartsfield-Jackson Atlanta International Airport	Nina R. Huchs
Sally Gable	Grant Thornton LLP	Joanne Harwood	Charles T. Huddleston
Barbara H. Gallo	Frannie Graves	Jim Hasson	Jodie J. Huiet
Marietta Gandy	Charmelda Gray	Kristen Hathcoat	Hunton & Williams LLP
Gannett Foundation	Billie and Michael Greenberg	Angele Hawkins	Charlie Hurt
Richard E. Gardner, III	Lynda K. Greer	Gail Hayes	Stacy Edelstein Hyken
Judy Garland	Cleburne E. Gregory, III	Ellen Hays	Thomas Hyman
Nicole Garsombke	Lauren and Jim Grien	Ann Hazzard	Julie Iarossi
Elizabeth Garvish	Tamila A. Grogan	Healthcare Georgia Foundation	IBM
Gas South, LLC	Sherie Gumer	Julie F. Heiner	ING Financial Services International
MaryAnne and Bruce Gaunt	Louise Gunn	Penny J. and Derek A. Henderson	ING Foundation
Peter and Gina Genz	E. Gail Gunnells	Sheila A. Henn	Integrity Financial Services
Georgia-Pacific Corporation	Amy Guthman	Donald P. Hensel	Sarah E. Gohl Isabel
Georgia Power Foundation, Inc.	Vivian Guthrie	Lila and Doug Hertz	Laurie Iscaro
Georgia Tank Lines, LLC	Beverly Guy-Sheftall, Ph.D.	Theodore M. Hester	Helen M. Ishii
Greg Gerhard	Mark A. Guza	Jennifer W. Hightower	Joseph D. Ivey
Andrew Ghertner	Habif, Arogeti & Wynne, LLP	Dee Hill	Booker and Birdie Izell
Mary Evelyn Gibert	Nekia Hackworth	Jo Ann Hill	Carol A. Jackson
Gifford Hillegass & Ingwersen, P.C.	Gali Hagel	Lindsey Harris Hill	R. Bruce Jackson
Edward T. Gilbert, Jr.	Julie B. Hairston	Michal Hart Hillman	Audrey L. Jacobs
Mary C. Gill	Anne Hale	Allen Hirsch	Deborah L. Jacobs
	Sarah E. Hale		Sunaina R. Jain, Ph.D.

Donors

Jasmin Jang
 Dr. Cheryl Jester-George
 Caroline C. John
 John and Rosemary Brown
 Family Foundation
 Melanie A. Johnson
 Wendy Johnson
 Deborah A. Johnson
 Joia Johnson
 Kristina Jones
 Stanley S. Jones
 Heather H. Jones
 LaToya Jones
 Miko Jones
 Anika and Alan D. Jones
 James B. Jordan
 Susan Joseph
 Walter Jospin
 Mary Humann Judson
 Kaiser Permanente
 Edward Kallal
 Nicole P. Kaltsas
 Katherine N. Kammer
 Kammer & Associates
 Susan Kanellos
 James R. Kanner
 Elizabeth A. Kargel
 Renee Kastanakis
 Sue Kath
 Martha Katz and
 Marshall W. Kreuter
 Carol Kauffmann
 Mark D. Kaufman
 Deborah Keefe
 Christina Kell

Ashley Steiner Kelly
 Mike Kenny
 Sal Kibler
 Lori Kilberg
 Mary J. Kilpatrick
 Kilpatrick Stockton LLP
 Kimberly-Clark Corporation
 King & Spalding LLP
 Heidi Kingman
 Warren Kingsley
 Dorothy Yates Kirkley
 Carol and Sidney Kirschner
 William H. Kitchens
 Rhonda L. Klein
 Hank Klibanoff
 Danita and Billy Knight
 Marjorie Fine Knowles
 Kathryn L. Knudson
 Elisa Smith Kodish
 Elaine Kolodkin
 Janet Kolodner and Michael Klein
 Danica Kombol
 Katherine Koops
 Nancy Koutnik
 Brandee Kowalzyk
 KPMG
 Phyllis A. Kravitch
 Nicole Bush Kruse
 Rita J. Kummer
 Susan Kupferberg and
 Richard Mitchell
 Kathleen Kurre
 Kutak Rock LLP
 Jennifer Lambert
 Marianne B. Lambert

LandAmerica Financial Group
 John L. Latham
 Vivian Lawand
 Beth Laxton
 Mary P. Leary
 Fontaine Lee
 Isha Ahsan Lee
 Dianne Leeb
 Lee Richardson & Associates
 Temme Barkin-Leeds and
 Steve R. Leeds
 Martin C. Lehfeldt
 Matthew Lerner
 Charles T. Lester, Jr.
 Fran Levine, CFP
 Elizabeth J. Levine
 Barbara Levitas
 Susan J. Levy, M.Ed., L.M.F.T.
 Valerie Hartman Levy and Jeff Levy
 Barbara and Bertram Levy
 Ralph B. Levy
 Paulette Norvel Lewis
 Kaci Lewis
 LexisNexis
 Elizabeth Lide
 Diane L. Lidz
 Carole Light
 Jared M. Lina
 Keith E. Linch
 Lauren C. Lindenbaum
 Judy Little
 Traci Little
 Locke Lord Bissell & Liddell LLP
 Elizabeth E. Long
 Mary N. Long
 Sarah Lopez and F. Ostrowski
 Kecia Baker Lott
 David Lotz
 Gay Love

Leigh Lovelady
 Lubo Fund, Inc.
 Adrienne Lance Lucas
 Patricia A. Lynch
 Pamela Mackey
 Macy's
 Dana M. Madonia
 Meghan Magruder
 Uma Majmudar
 Sandra W. Majors
 Jennifer Malinovsky
 Lorie Mallchok
 Tiffany Mallory
 Wade Malone
 Ed Marshall
 Michele Marston
 Judy C. Marx
 Philip J. Marzetti
 Marilyn and John Massa
 Paula Matabane
 Susan and Richard Matherly
 George A. Mattingly
 Michelle Maurice
 Keith A. Mauriello
 Marcia M. Mayoue
 Atiba Mbiwan
 Elizabeth and David McAlister
 Debby McCarty
 Frank J. McCloskey
 Sharon M. McClure
 Anna McCullough
 Monica R. McCullough
 Sally McDaniel
 Sharon McDaniel
 Kate McEnroe
 Jamala McFadden
 Jim McGibbon
 Danny McKeithen
 McKenna Long & Aldridge LLP

McKenney's Inc. Mechanical Contractors & Engineers	Kristina A. Morris	Jennifer L. M. Owens	Larry Polk
Wanda L. McKenzie	Mu Rho Sigma Sorority Inc	Michele Ozumba	Alisa Porter
Susan A. McLaughlin	Jessica Muhammad	Zenovia Leonora Palmer	Gail Porter
Linda McMurray	Sandra A. Mullins	Lainey Papageorge	Judge Patsy Y. Porter
Nancy K. McSweeney	Ms. Susan Mumpower-Spriggs	Peter G. Pappas	Porter Keadle Moore, LLP
Alli Medof	Barry M. Murphy	Amy K. Parker	Kara Portnell
Flavia Mercado, M.D.	My Sisters Keeper Foundation for Women	Reverend Rebecca Parker	Judith A. Powell
Lynn W. Merrill	Patricia M. Nalle	Parker, Hudson, Rainer & Dobbs, LLP	Kurt A. Powell
Angela Mertz	Amber Nash	W. Henry Parkman	Marie Powell
Metro Atlanta Chamber of Commerce	Alisha Nasse	Peggy Parks	Shirley Powell
Heather Michael	National Association of Chinese Americans	Karen Elaine Webster Parks	Powell Goldstein LLP
Alice K. Michaelson and Dr. Robin Dretler	Navigant Consulting	Behrooz Parvarandeh	Becky Powhatan
Carey Miller	Deborah Neese	Marguerite Patrick	Nancy L. Prather-Dow
Ellen Miller	Melanie Nelkin	Kathleen Pattillo	Helen Smith Price
Barbara Miller-Murphy	Hilary and Stuart Nelson	Paul, Hastings, Janofsky & Walker LLP	PricewaterhouseCoopers LLP
Joan Millett	Nelson Mullin Riley & Scarborough LLP	Anita Paye	Principal Global Investors
Katie Mills	Carol D. Newman	Mr. and Mrs. E. Fay Pearce, Jr.	Private Bank of Buckhead
Dana K. Mills	Jerome Nicholas	Claudia Penney	Tamara M. Puckett
Kenneth L. Millwood	Matt Nichols	Steven A. Pepper	Lisa Pulliam
Kathleen Minarik	Michelle Nichols	Julia Perilla	Barbara Pyle
Rhonda N. Mincey	Valerie N. Njiiri	Ashley Rian Perry	Amy Alcoke Quackenboss
Glenda and David Minkin	Elizabeth H. Noe	Erica Peters	Quality Care for Children
Alan Minsk	Thena Monts Norman	Robin Peterson	Gail Quick
Pat Mitchell	Marlena Norris	Sam Pettway	R.E.M./Athens, Ltd.
Shirley A. Mitchell	John North	Patricia Pflum	Shelly Rabinovitch
Kimberly Mitchem-Rasmussen	Mary B. Norwood	Alicia Philipp	Michael M. Raeber
Mitchem Rasmussen & Associates	Mary Ann B. Oakley	Maritza Pichon	Ronald Raider
Susanne Mixon	Judith O'Brien	Charles R. Pickering	Kristina P. Rainey
Meredith Mlynar	Patricia O'Connell	Celeste Pickron	Kirsten Rambo
Judith Mod	Susan O'Hare	Piedmont Hospital	Cathy Raper
Caroline Moise	Older Women's League of Metro Atlanta	Kim and Bill Pike	Paula Grogan Rattray
Jeanie C. Montaigne	Anne Olson	Robert J. Pile	Janet E. Rechtman
Sabrina Moore	Brandi Orbin	Linda Hall Pitts	Mr. Shyam Reddy
Carol Morgan	James Orr	Plum Creek Foundation	Maria Cristina Reeves
Elizabeth Ann "Betty" Morgan	Nancy J. Overholtzer	Suzanne Plybon	Refugee Resettlement and Immigration Services of Atlanta
Susan L. Morgan		Norma R. Poindexter	Refugee Women's Network, Inc.
		Abigail J. Politzer	Regions Executive Recruiting
			Ginger Reid

Donors

Susan Reinach
 Dr. Beth Reingold
 Margaret and Bob Reiser
 Laurie Renfro
 Bonnie Revoner
 Emily-May and Jim Richards
 Nekita Richardson
 Deborah J. Richardson
 Clare Richie
 Valerie Bordt Riecke
 William J. Rissler
 Richard Robbins
 Betsy P. Roberts
 Steven Roberts
 Helen Robinson
 Patricia Robinson
 Robert J. Robinson
 Ronnita E. Robinson
 Tia Robinson
 Nancy Robitaille
 Heather S. Rocker
 Agnes Rodriguez
 Edna Rodriguez
 Geoff Rogers
 Donna and Edward Rohling
 Barbara Rose
 Ruth Rosenberg
 Barbara Rosenblit
 Jennifer Rosenfeld
 Kelli Rosenthal
 Lyn Ross
 Toni Ross
 Peggy Roth
 Michelle Rothenberg-Williams

Susan Rothschild
 Hedy S. Rubinger
 Amelia Rudolph
 Rachel L. Ruskin
 Betsey Russell
 Deborah Ryan
 Sallye Ryan
 Sacchi/Marane Fundraising
 Professionals
 Louise S. Sams
 Sanders Financial Management, Inc.
 Cherylene Sands
 Robin H. Sangston
 Lynn B. Saperstein
 Sara Blakely Foundation
 Lenore Satterfield
 Jacquelyn H. Saylor
 Beth S. Schapiro, Ph.D.
 Abe Schear
 Heather Scheffel
 Jasmine Schliesmann-Merkle
 Joseph Schulman
 Sandra A. Sciascia-Zirger
 Alexis Scott
 Olivia A. Scriven
 Mary R. Buckle Searle
 Debbie Segal
 Emily and Bill Seigler
 Seyfarth Shaw LLP
 Simit Shah
 Brandy Shannon
 Ena A. Shaw
 Louise E. Shaw
 Rita A. Sheffey

Sheffield Harrold Charitable Trust
 Jennifer Shelfer
 Sarah Shellman
 Karen W. Shelton
 Lucille Sheng French
 Jennifer Sheppard
 Wendy Shoob
 Herbert Short
 Julie Short
 Margaret and George Shortreed
 Tobyanne Sidman
 Jodi Siebold
 Lindsey Siegel
 Nancie L. Sill
 Terianne Simmons
 Hong-Tsun Simon, CFA
 Simply L Hair Studio, Inc.
 Polly and Charlie Simpson
 Brad Singleton
 Lucia H. Sizemore
 B. J. Skillman
 Nancy and Phillip Skinner
 skirt! Magazine
 Adam Skorecki
 Daniel P. Slowey
 Elizabeth L. Smalley
 Carmen D. Smith, Esq.
 Caryl Greenberg Smith
 Kecia Williams Smith
 Rebecca Smith
 Rob Smulian
 Donna Smythe
 Sherrie Snipes-Williams
 Kerri Snow
 Christa Sobon
 Southern Company
 Felicia Speetjens
 Patricia C. Ayres and
 John C. Spinrad

Tycho H.E. Stahl
 Mason Stephenson
 Anne Sterchi
 Carol Ann Stewart
 Gabrielle Stewart
 Kate S. Stillman
 Sandra S. Stone, Ph.D.
 Holly Strelzik
 R. Strong
 Beth Sugarman
 Karen Sukin
 Sylvia M. Sultenfuss
 SunTrust Banks, Inc.
 Marilyn Suriani
 Sutherland
 Kathy Swahn
 Mary Sweeney
 Judy Tabb
 Martha Talbott
 Jeannie Tarkenton
 Liz Tate
 Faye R. Tate
 Tatum Levine & Powell, LLP
 Monique Tavares
 Scott E. Taylor
 Marc A. Taylor, Esq.
 Virginia Taylor
 Judith and Mark Taylor
 Taylor, Busch, Slipakoff & Duma, LLP
 Elaine Taylor-Klaus
 The Andrews Family Fund
 The Atlanta Journal-Constitution
 The Bank of America Charitable
 Foundation, Inc.
 The Cathedral of St. Philip
 The Coca-Cola Company
 The Community Foundation
 for Greater Atlanta
 The Graves Foundation

The Harold & Kayrita Anderson Family Foundation
 The Home Depot Foundation
 The Home Depot USA
 The Moorings Group
 The Rockdale Foundation, Inc.
 The Schapiro Group, Inc.
 The Tull Charitable Foundation
 The W.K. Kellogg Foundation
 The Wieland Family Foundation
 The Women's Finance Exchange, Inc.
 Carol Todd Thomas
 Geri Thomas
 Alfea Thomas
 Beverly D. Thomas
 Kristina Kopf Thomas
 Barbara Thompson, LMFT
 Rebecca Thompson
 Suzie C. Tindall, M.D.
 Katharine Tinkler
 Jessica Tobin
 Rebecca Tompkins
 Eugenia Topple
 Carrie Gwen Towle
 Dr. Henrie Treadwell
 Pamela L. Tremayne, J.D., Ph. D.
 Troutman Sanders LLP
 Lisa Tunnell
 Turner Broadcasting System, Inc.
 Sara Turnipseed
 Carol Lohse Tveit
 UPS
 Yvette Upton
 Ray and John Uttenhove
 Valu Teachers
 Elizabeth C. Van Houten
 Jyotsna Vanapalli
 Lucy Carpenter Vance

Ronnie Vangelder
 Chilton Varner
 Melody Vaughn
 Shunta Vincent
 Carol and Joseph Vivona
 W.K. Kellogg Foundation
 Wachovia Bank, N.A.
 Bradley E. Wahl
 Ronit Z. Walker
 Rachel Alterman Wallack
 Jeremy T. Ware
 Harriet King Wasserman
 Jill Wasserman
 Mark Wasserman
 Anonymous
 Ann Watkins
 Ann Watson
 Theresa Weber
 Margaret Weddington
 Amy Weil
 Ron Weiner
 Brooke Triple Weinmann
 Linda Weiskoff, LCSW
 Sidney S. Welch, J.D., M.P.H.
 Susan Wells
 Nanette Wenger, M.D.
 Alicia Wente
 Alice H. Wertheim
 Ruth T. West
 Anna Westbrook
 Delores Crockett Whaley
 Larry White
 Malkia White
 Melissa Halstead-White
 Patsy White
 Margaret Whitehill-Boynton
 Sue and John Wieland
 Ranney Wiesemann
 Abbe Wiesenthal

Wiggle Bug Foundation
 Barbara Wiley
 Kristen Wilhelm
 Rebecca Wilkes
 Tonya B. Williams
 Eloise Williams
 Ozella Nelson Williams
 Annette Willis
 Polly J. Willis
 Pat Willis
 Jinaki Wilson
 Kiki Wilson
 Melody Wilder Wilson
 Shirley Wilson
 Tiffany Wilson
 Kathy Wilson-Chu
 Carolyn Thorn Wingfield
 Roslyn Winston
 Joni and David Winston
 Sue Wisch
 Womble Carlyle Sandridge & Rice

Women Judges of Fulton County
 Women's Finance Exchange
 Women's Funding Network
 Women's Policy Group
 Lani Lee Wong
 Marcia Wood
 Pamela Woodley
 Ruth Woodling
 Bob Woodward
 Cathy Woolard
 Catharine Brooke Wooten
 World Children Center
 WSB-TV
 W. Scott Wright
 Lindell Wright
 Jeannie B. Wright
 Dr. Evelyn Wynn-Dixon
 Dee Anne Wyse
 Regina York
 Dr. Linda G. Zatlín
 Sara Zeigler
 Daniel Zielke

Staff

Barbara Mosacchio, Chief Executive Officer

Jaci Bertrand, Community Initiatives Assistant

Miranda Brownlee, Intern

Melody Cochran, Office Manager

Faye Craven, Executive Assistant/Board Liaison

DiShonda Hughes, Director of Community Initiatives

Sal Kibler, Director of Communications

Linda Hall Pitts, Vice President of Finance and Operations

Deborah Ryan, Vice President of Philanthropy

Sherrie Snipes-Williams, Vice President of Community Initiatives

Tiffany Wilson, Gifts Processing Coordinator

As of April 14, 2009

Statement of Financial Position

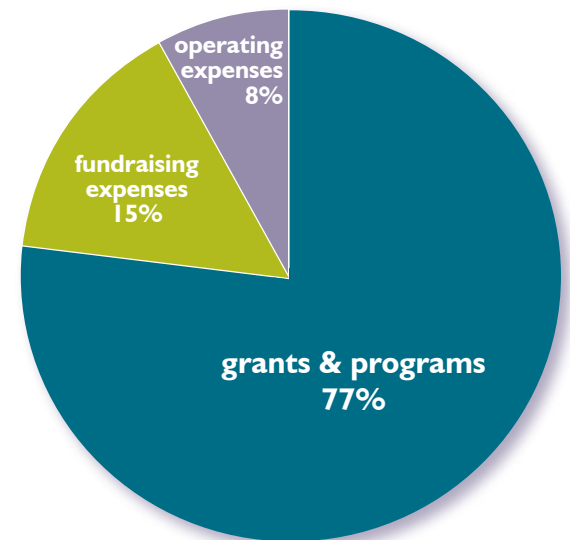
for the year ending June 30, 2008

Assets	
Cash and cash equivalents	\$ 150,178
Investments	5,110,316
Unconditional promises to give	1,735,699
Other assets	39,497
<hr/>	
Total Assets	\$7,035,690
<hr/>	
Liabilities	\$1,544,891
Net Assets	
Unrestricted	\$2,619,431
Temporarily restricted	476,291
Permanently restricted	2,395,077
<hr/>	
Total Net Assets	\$5,490,799
<hr/>	
Total Liabilities & Net Assets	\$7,035,690

Statement of Activities

for the year ending June 30, 2008

Support and Revenue	
Contributions	\$2,899,047
Events	145,527
Investment Income	64,621
Other Income	2,502
<hr/>	
Total Support and Revenue	\$3,111,697
<hr/>	
Expenses	
Grants and programs	\$2,990,354
Fundraising expenses	587,494
Operating expenses	326,671
<hr/>	
Total Expenses	\$3,904,519
<hr/>	
Decrease in net assets	(792,822)
Net assets at beginning of year	6,283,621
Net assets at end of year	\$5,490,799



Financials

Alumnae Board Members

Elaine Alexander
 Boyce Ansley
 Rep. Kathy Ashe
 Barbara Asher (Deceased)
 Alice H. Ball
 Dorothy Beasley
 Veronica Biggins
 Diana Blank
 Gwendolyn Bookman
 Nancy Boxill
 Dr. June Dobbs Butts
 Edie Cofrin
 Judge Brenda H. Cole
 Amy Jorgensen Conlee
 Ann Cramer
 Leah Creque
 Charlene Crusoe-Ingram
 Denise Dauphin
 Stephanie C. Davis
 Hattie B. Dorsey
 Stacey Pastel Dougan
 Diane Durgin
 Melita Easters
 Ilene Engel
 Aida Perez Flamm
 Dr. Roberta Golden, Ph.D.
 Beverly Guy-Sheftall, Ph.D.
 Carol A. Jackson
 Joia Johnson
 Carol Kauffmann
 Marjorie Fine Knowles
 Dianne Leeb
 Valerie Hartman Levy
 Mary N. Long

Sally McDaniel
 Flavia Mercado, M.D.
 Pat Mitchell
 Karen Elaine Webster Parks
 Julia Perilla
 Celeste Pickron
 Pamela Poitier
 Helen Smith Price
 Paula Grogan Rattray

Beth S. Schapiro, Ph.D.
 Alexis Scott
 Polly Simpson
 Xuan Nguyen Sutter
 Judith Taylor
 Lisa Tunnell
 Ray Uttenhove

Rachel Alterman Wallack
 Susan Wells
 Ruth T. West
 Delores Crockett Whaley
 Sue Wieland
 Pat Willis
 Cathy Woolard

Board of Directors

Emily-May Richards, Chair

Rev. Joanna Adams

Pinney Allen

Cindy Brazell, Vice Chair

Barbara W. Brown, RN, MBA

Judi V. Bruce, Treasurer

Susana Maria Chavez

D. BryAnn Chen

Carol Z. Cooper

Suzanne C. Feese

Paula Goodman

Lauren Grien

Etta Raye Hirsch

Dorothy Yates Kirkley

Danita V. Knight

Marcia M. Mayoue

Glenda Blum Minkin

Shirley A. Mitchell

Carol A. Newman

Elizabeth H. Noe

Michele Ozumba

Beverly D. Thomas, Secretary

Lucy Carpenter Vance

Lani Lee Wong

CFO and COO, The Shoptaw Group

Pastor, Morningside Presbyterian Church

Head of School, Atlanta Girls' School

Partner, Jones Day

Vice President, RL Brown & Associates

Partner, Deloitte Tax, LLC

Vice President & SE Regional Manager, Parking Company of America

Executive Director, Refugee Women's Network

Community Volunteer and Fundraiser

Partner, King & Spalding LLP

District Manager, Best Buy Stores, Inc.

Community Volunteer, Former Partner Alston & Bird LLP

Community Volunteer

Founding Partner, Dorothy Yates Kirkley, LLC

Consultant, Public and Media Relations

President, Mayoue Wealth Management LLC

Development Consultant, 36 Delta Place LLC

Senior Vice President Southeast Market Development, Bank of America

Retired Partner, Powell Goldstein, LLP

Partner, Paul, Hastings, Janofsky & Walker, LLP

President & CEO, Georgia Campaign for Adolescent Pregnancy Prevention

Vice President, Communications and Public Affairs, Kaiser Permanente

Community Volunteer

Chair, National Association of Chinese-Americans, Atlanta Chapter

2008/2009 Members

THE ATLANTA WOMEN'S FOUNDATION

50 Hurt Plaza SE | Suite 401
Atlanta, Georgia 30303
Tel: 404.577.5000

www.atlantawomen.org



FSC
Mixed Sources
Product group from well-managed
forests, controlled sources and
recycled wood or fibre

Cert no. SGS-COC-004125
www.fsc.org
© 1996 Forest Stewardship Council